

A STRONG, DURABLE, RECYCLABLE, SYNTHETIC SLATE



- ✓ Conservatories
- ✓ Lean To's
- ✓ Garages
- ✓ Flat to Pitch
- ✓ Educational buildings
- ✓ Commercial buildings
- ✓ Community centres
- ✓ Vertical cladding
- ✓ Holiday homes
- ✓ Park homes
- ✓ Camping pods
- ✓ Stables



WARM ROOF DIVISION

RAISING THE STANDARDS IN LIGHTWEIGHT ROOFING

A STRONG, DURABLE, RECYCLABLE, SYNTHETIC SLATE

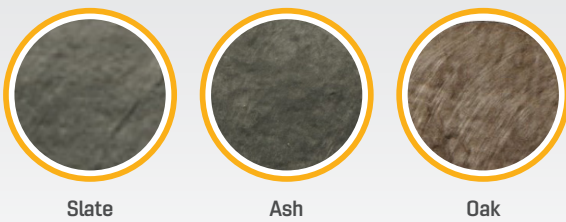
ADVANTAGES

- British made
- Designed to give a traditional slate appearance
- Lightweight
- Low pitch
- Does not break or crack
- Quick installation
- Cost effective
- Virtually maintenance free
- Extensive range of accessories and flashings available
- Fully dry-fixed
- Guaranteed for 40 years against weather penetration
- Full technical support available
- Recycled core material

TECHNICAL DATA

- Min. pitch: 14°
- Max. pitch: 90°
- Weight: 0.6kg
- Overall width: 297mm
- Overall height: 445mm
- Batten gauge: 152mm-191mm
- Roof cover per slate: 0.06m²
- Slate per m²: 18-22
- Weight as laid per m²: 12kg
- Ridge: 5.5 per linear metre
- Hip: 5.5 to 6.5 per linear metre
- Material: Recyclable blend of Polypropylene & Limestone
- Fire resistance: BS476 Part 3

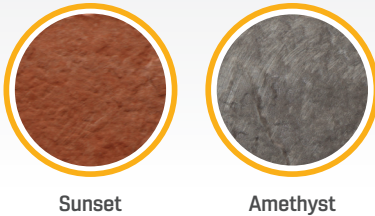
STOCK COLOURS



Slate

Ash

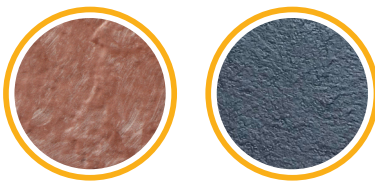
Oak



Sunset

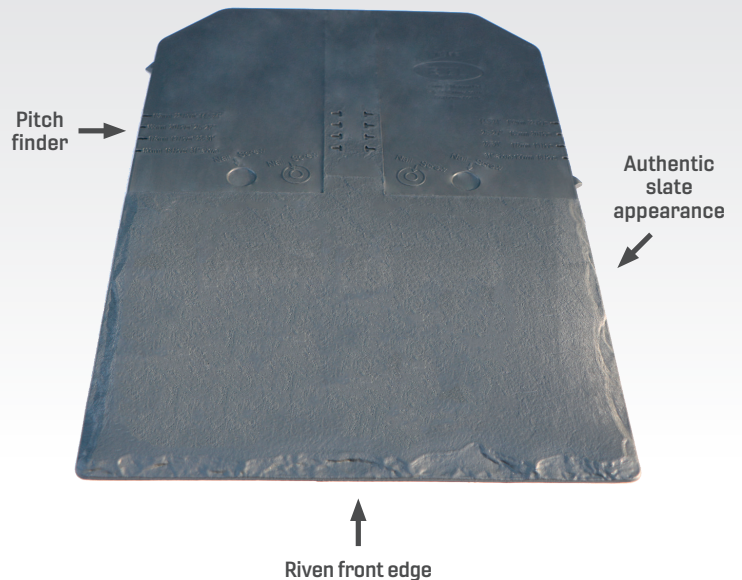
Amethyst

NON-STOCK COLOURS



Sunshine

Charcoal



APPROVALS:

- Manufactured using ISO 9001 approved materials
- ISO 14001